

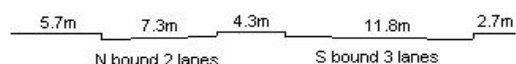
YEAR 2020

CORE STATION 1009

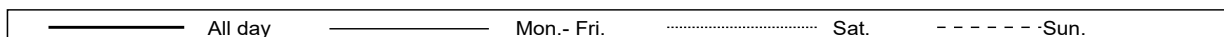
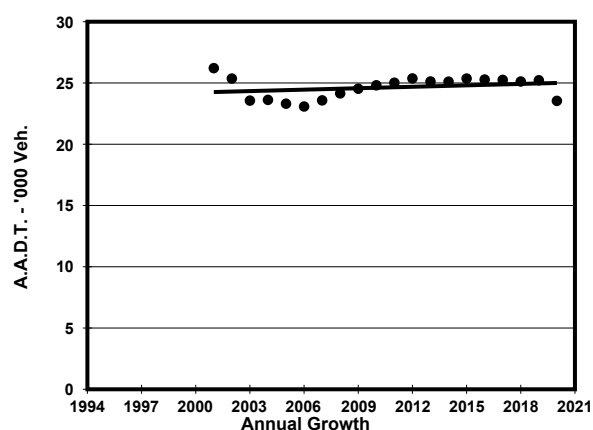
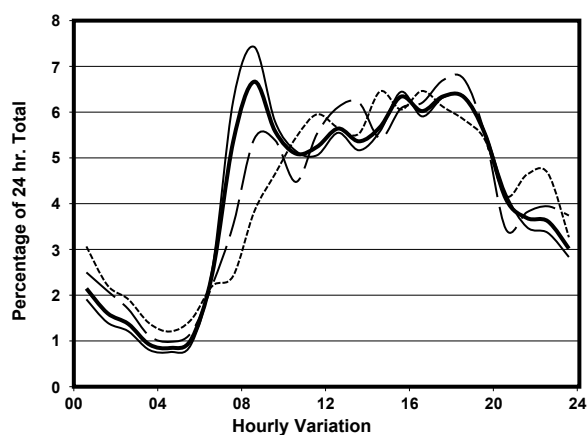
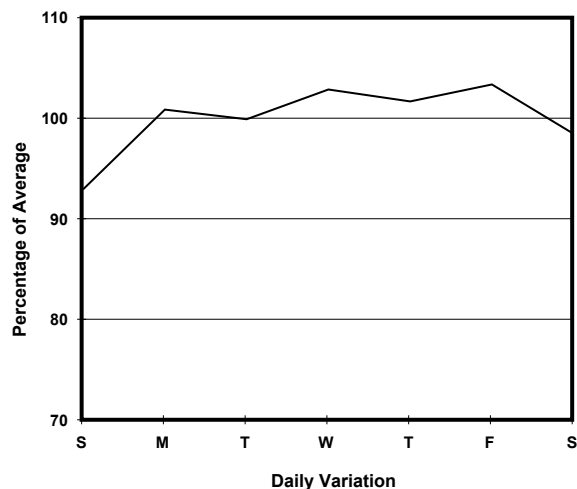
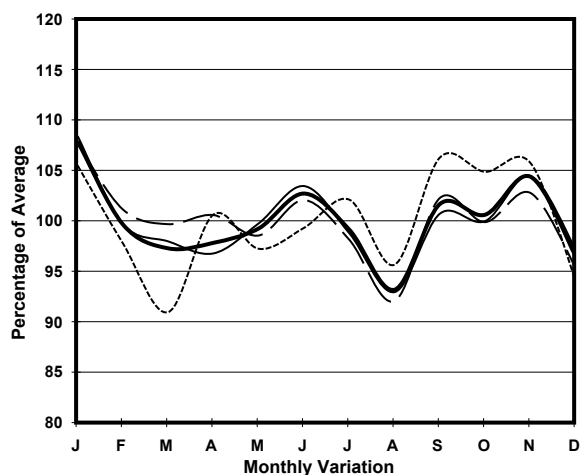
ROAD NETWORK MAJOR

ROAD TYPE PRIMARY DISTRIBUTOR

LINK CHAI WAN RD (from ISLAND EASTERN CORRIDOR  
APPROACH to TAI TAM RD)



## 1. TRAFFIC FLOW VARIATION AND GROWTH



## 2. TRAFFIC CHARACTERISTICS (BY DIRECTION)

Parameter	All - Day	Mon. - Fri.	Sat.	Sun.
<b>SOUTH BOUND</b>				
A.A.D.T.	11780	11970	11650	11220
R 12 / 24 - %	67.3	68.4	66.6	62
R 16 / 24 - %	85.3	86.3	83.8	81.3
AM Peak Hour	0800-0900	0800-0900	0800-0900	0900-1000
One-way flow at AM peak hour	780	880	660	490
T - % (AM)	-	7.6	-	-
PM Peak Hour	1800-1900	1800-1900	1600-1700	1700-1800
One-way flow at PM peak hour	690	720	750	620
T - % (PM)	-	9	-	-
Prop.of commercial vehicles - 16 hr.	-	10.4	-	-
<b>NORTH BOUND</b>				
A.A.D.T.	11760	12060	11550	10790
R 12 / 24 - %	72	73.5	69	66.9
R 16 / 24 - %	87.9	88.9	85.3	85.4
AM Peak Hour	0800-0900	0800-0900	0900-1000	0900-1000
One-way flow at AM peak hour	790	910	640	540
T - % (AM)	-	9.8	-	-
PM Peak Hour	1700-1800	1700-1800	1800-1900	1600-1700
One-way flow at PM peak hour	900	930	950	900
T - % (PM)	-	9.2	-	-
Prop.of commercial vehicles - 16 hr.	-	11	-	-

## 3. OTHER INFORMATION AND COMMENT

**4. Vehicle classification and occupancy - Monday to Friday**

Time		Class of vehicle									
		Motor	Private	Taxi	Private	PLB	Goods veh.		Non	Fr. Bus	
		Cycle	Car		LB		Light	M & H	Fr. Bus	SD	DD
0700-0800	Pro	6.0	31.2	31.2	2.9	6.4	5.4	0.6	5.4	0.2	10.8
	Ocp	1.1	1.3	2.0	5.9	10.4	1.8	2.0	11.5	21.0	37.8
0800-0900 Peak hour	Pro	4.2	52.6	24.3	1.4	3.6	5.2	0.2	1.8	0.2	6.6
	Ocp	1.2	1.3	2.0	2.3	12.0	1.9	1.0	7.0	30.3	43.9
0900-1000	Pro	3.8	45.4	22.1	1.0	4.6	13.5	0.7	0.5	0.2	8.3
	Ocp	1.1	1.4	2.1	3.3	12.5	1.4	1.3	4.5	23.0	26.6
1000-1100	Pro	2.0	42.3	24.4	1.7	4.8	13.6	1.4	1.1	0.3	8.2
	Ocp	1.1	1.3	2.1	2.5	10.5	1.6	1.6	4.8	29.0	21.4
1100-1200	Pro	3.0	32.9	27.8	3.0	6.0	15.5	1.6	3.0	0.1	7.1
	Ocp	1.0	1.3	2.1	2.5	11.0	1.6	1.7	3.5	22.5	22.4
1200-1300	Pro	7.1	43.1	19.6	3.3	5.2	12.8	0.8	0.5	0.1	7.4
	Ocp	1.1	1.4	2.2	2.7	8.1	1.5	3.0	2.0	19.0	23.2
1300-1400	Pro	6.5	31.4	25.5	5.3	5.3	14.6	1.7	2.0	0.0	7.7
	Ocp	1.1	1.4	1.9	2.4	8.1	1.6	1.7	4.4	0.0	24.9
1400-1500	Pro	3.9	35.6	27.6	2.3	6.4	14.9	1.0	1.0	0.1	7.1
	Ocp	1.0	1.4	1.9	2.2	9.0	1.4	2.0	3.0	26.0	26.2
1500-1600	Pro	2.7	40.9	25.7	1.9	4.8	14.7	0.3	1.3	0.1	7.6
	Ocp	1.0	1.3	1.9	3.4	8.5	1.7	1.0	6.2	14.0	24.8
1600-1700	Pro	2.9	41.0	22.5	2.0	6.9	11.9	0.3	3.2	0.1	9.1
	Ocp	1.2	1.5	2.0	2.4	9.0	2.0	1.0	10.4	12.0	31.2
1700-1800	Pro	4.7	44.9	20.2	0.8	6.4	12.5	0.6	1.1	0.2	8.6
	Ocp	1.1	1.6	1.9	1.3	12.2	1.6	1.0	3.0	23.0	39.8
1800-1900	Pro	4.2	58.4	17.8	0.6	4.2	5.7	0.0	1.3	0.2	7.6
	Ocp	1.1	1.4	2.0	2.0	12.5	1.3	0.0	2.5	22.3	43.0
1900-2000	Pro	5.2	53.6	20.6	0.9	4.6	4.6	0.3	0.6	0.1	9.4
	Ocp	1.1	1.4	1.8	1.3	8.8	1.3	4.0	2.0	12.0	25.7
2000-2100	Pro	5.5	47.0	23.2	0.7	4.5	6.2	0.0	0.7	0.2	12.0
	Ocp	1.1	1.2	1.8	1.5	7.3	1.4	0.0	1.0	17.5	17.6
2100-2200	Pro	5.7	38.7	36.9	0.4	3.5	2.6	0.0	0.0	0.1	12.0
	Ocp	1.1	1.5	1.8	2.0	7.4	1.5	0.0	0.0	4.0	24.2
2200-2300	Pro	4.8	36.8	35.9	2.2	3.9	3.5	0.4	0.4	0.1	11.8
	Ocp	1.0	1.5	1.9	2.8	6.8	1.9	2.0	4.0	12.0	17.9
16 hours	Pro	4.4	43.0	24.6	1.9	5.1	10.1	0.6	1.5	0.1	8.5
	Ocp	1.1	1.4	2.0	2.7	9.9	1.6	1.8	6.4	21.3	28.6

**Legend: Pro.** Proportion of vehicles in % (Sum may not add up to 100% due to figure rounding)\*

**Ocp.** Average occupancy of vehicles including both driver and passengers\*

**M&H** Medium and Heavy

\* All traffic data are collected from combined bounds